

**urban** + Fountains  
Furniture

# Drinking Fountains & Bottle Refill Stations

Making life better

[urbanff.com.au](http://urbanff.com.au)



At **Urban+** we believe there is a better way to do business.

Our mission is to support the shift to a **circular economy** by supplying sustainable drinking fountains and street furniture that not only enhance public spaces but can remain in use for generations to come.

# Drinking fountains

## Apollo 950 Drinking Fountain

The Apollo 950 is a state-of-the-art drinking fountain inspired by nature with a sleek, minimalist waterfall design.

Made from solid stainless steel this modern fountain is available with an optional signage/noticeboard back panel that can be easily updated with informative information or left as a decorative artwork feature. It can also be customised with an additional bottle refill point or reduced-height basin to make it disabled accessible.



### Dual Height Model

ADA Compliant + NSF Certified\*

#### options



### Signage Board Model

Signage Board height/width is customisable + NSF Certified\*

#### options



### Artwork Panel Model

NSF Certified\*

#### options



### Etched Artwork Model

NSF Certified\*

#### options



\*NSF Certification Pending



office@urbanff.com.au | urbanff.com.au

Scan here to view our complete product catalogue!



# Drinking fountains & refill stations

**“By 2050 there will be more plastic than fish in our oceans”**  
- United Nations'

**Apollo 280 Drinking Fountain**  
SKU: DFA280

Total Height: 900mm  
Clearance Height: 800mm  
Base: 191mm x 160mm

**brand me!**

disabled accessible  
colour options  
Dulux powder coating



**Apollo 450 DDA Drinking Fountain**  
SKU: DFA450

Total Height: 1006mm  
Width: 200mm

disabled accessible  
colour options  
Dulux powder coating  
dog tap & bowl  
bottle refill



**BF200WM Wall Mounted Single Tap Bottle Refill**  
SKU: DFBF200WMS

Total Height: 155mm

bottle refill



**BF200WM Wall Mounted Bottle Refill Multi Strip**  
SKU: DFBF200WM

Options: 2 tap, 3 tap, 4 tap  
Height: 155mm  
Width: 746mm | 1143mm | 1548mm

bottle refill



**Apollo 880 Drinking Fountain**  
SKU: DFA880

Total Height: 915mm  
Clearance Height: 846mm  
Base: 300mm x 200mm

disabled accessible  
colour options  
Dulux powder coating



**Apollo 900 Drinking Fountain**  
SKU: DFA900

Total Height: 876mm  
Clearance Height: 775mm  
Base: 200mm x 100mm Tapered

disabled accessible  
colour options  
Dulux powder coating



**BF400P Water Bottle Refill Station**  
SKU: DFBF400P

Total Height: 1010mm  
Width: 114mm  
Depth: 309mm

bottle refill  
recycled plastic



**BF400T Water Bottle Refill Station**  
SKU: DFBF400T

Total Height: 1010mm  
Width: 114mm  
Depth: 309mm

bottle refill  
FSC certified timber



**BCC Drinking Fountain**  
MODEL: BSD-7331

316 stainless steel  
bottle refill  
dog tap & bowl



**BF200 Wall Mounted Water Bottle Refill Fountain**  
SKU: DFBF200W

Total Height: 353mm  
Width: 166mm

bottle refill  
colour options  
Dulux powder coating



**PF400 Pet Drinking Fountain**  
SKU: DFPF400SURF

Total Height: 1000mm  
Width: 100mm  
Dog Bowl Height: 170mm

colour options  
Dulux powder coating  
dog tap & bowl



**PF450 Pet Drinking Station**  
SKU: DFPF450

Total Height: 1000mm  
Width: 200mm  
Depth: 112mm

colour options  
Dulux powder coating  
dog tap & bowl

**brand me!**



**BF200 Water Bottle Refill Fountain**  
SKU: DFBF200

Total Height: 1050mm  
Width: 180mm x 250mm

bottle refill  
colour options  
Dulux powder coating

**brand me!**



**spare parts**  
Urban+ can supply all major spare parts.  
Contact [office@urbanff.com.au](mailto:office@urbanff.com.au)

## Popular options & add-ons

- + water filter
- + bottle refill
- + water bubbler
- + logo or message
- + dog tap & bowl
- + catchment tray

- + stainless steel finish
- + galvanised steel finish
- + maintenance tap
- + Dulux powder coating

scan to access the Dulux colour chart - over 100 options!



## Drinking fountains & refill stations | chilled



### CF200 Chilled Outdoor Drinking Fountain

SKU: DFCF200

Total Height: 900mm  
Clearance Height: 800mm  
Base: 191mm x 160mm



### CF400 Chilled Outdoor Drinking Fountain

SKU: DCF400

Total Height: 951mm  
Width: 1624mm  
Depth: 497mm



### Chilled VersaFiller Hydration Station

SKU: DFAQVERSAHS

Height: 960mm  
Width: 413mm  
Depth: 473mm



### Chilled Bottle Filler - Wall Recessed

SKU: DFAQWRBF

Height: 1035mm  
Width: 502mm  
Depth: 46mm



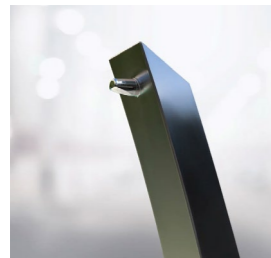
### Chilled Hydration Station - Wall Recessed

SKU: DFAQWRBF

Height: 1143mm  
Width: 502mm  
Depth: 483mm (287mm recessed)



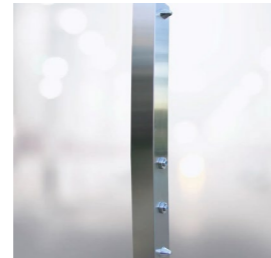
## Outdoor showers



### Eco Shower

SKU: SHECO

Height: 2207mm  
Width: 155mm



### SS150 Shower

SKU: SHSS150 (single shower)

Height: 2200mm  
Width: 162mm



## The O fountain

### Placemaking, community and experience wrapped in one

The **O fountain** combines form and function with art to create a stunning centrepiece for projects of all sizes. It's the brainchild of designer, Gretha Oost, who developed the fountain as a tool to help reduce the excessive use of single-use plastic bottles worldwide.



Supplied as a blank white canvas, the O fountain can be painted by an artist of your choice.

For more information on how to install this fountain and how to engage a local artist, see our downloadable resources on our website

[urbaff.com.au/product/the-o-fountain](http://urbaff.com.au/product/the-o-fountain)



**[urbanff.com.au](http://urbanff.com.au)**